

LIVIN MODULAR

Sustainable Modular Construction

www.livinmodular.com.au



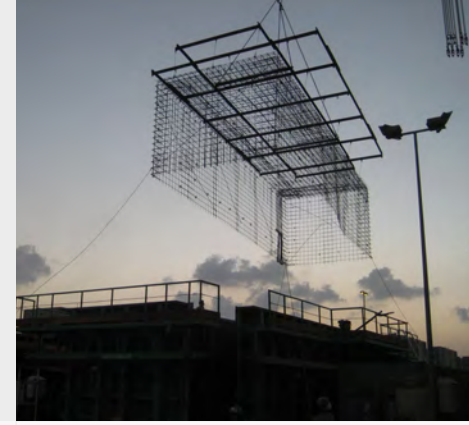
Modular Designed Kitchen and Living





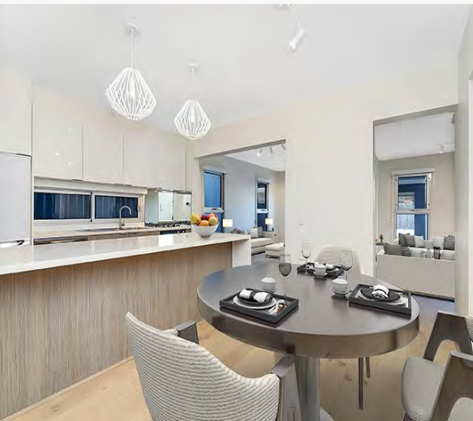
DESIGN

- Delivered by a handpicked team of Architects, Engineers and Industry Professionals
- Flexible design options to suit all styles of Architecture
- Designed to comply, and in some instances supersede, Industry Standards
- Versatility in shape and form of buildings
- Precision manufacturing delivers quality of construction



MANUFACTURE

- Manufacturing method allows for easy customization
- 'Cookie-cutter' approach provides standardization of module dimensions creating greater efficiencies
- Preplanned design and execution produces less wastage and guaranteed accuracy
- Hydraulically operated production moulds reduce labour costs and site inefficiencies
- Onsite Engineer ensures stringent quality assurance is delivered



FINISH

- Plumbing and electrical conduits cast in to module before delivery
- Off-site manufacture ensures millimeter perfect precision for fit-off and secondary trades
- Off-site manufacture can be coupled with modular windows, doors and joinery significantly reducing project delivery times
- No limitations on the selection of internal finishes
- Superior acoustic and thermal properties mean Energy Ratings of 7stars and more easily met

TRANSPORT AND INSTALL

- Completed modules are via trailers to site and craned into transported position
- Building superstructure fully installed in a matter of days
- Lock-up' can be achieved in days, rather than weeks or months
- Faster installation significantly reduces overheads



SUPERIOR
FIRE RATING



ENERGY
EFFICIENT



SUSTAINABLE



HIGH LEVEL
ACOUSTICS



DURABLE

THE MODULAR BUILDING REVOLUTION



Apartment Blocks

Student Housing



Affordable Housing

Mass Accommodation



Town Houses



TABLE OF CONTENTS

"Choose one of our pre-existing designs or speak to us about creating a customized plan ..."



One Module Toilet

6

Two Module

7-9

Staggered

7

L- Shape

8

L2 - Shape

9

Three Module

10-14

C-Shape

10

Outstanding

11

Z-Shape

12

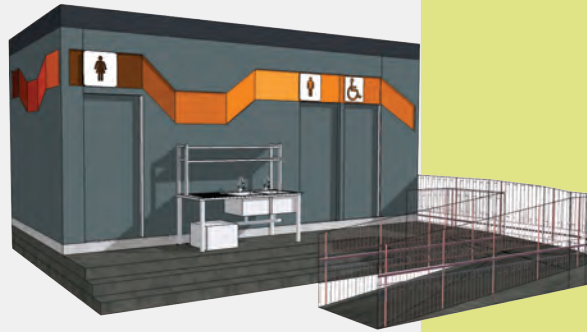
Cascade

13

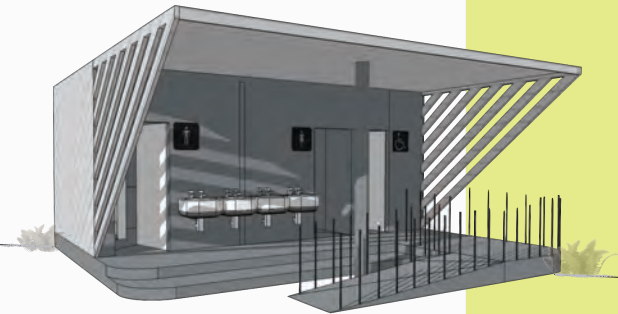
Train

14

Finish : Colored Steel sheets
and textured render finish
HUE BAND



Finish : Steel sheeting
and roofing
ANGULAR



Finish : Timber slats and
grooved concrete/ render
surface
FOREST



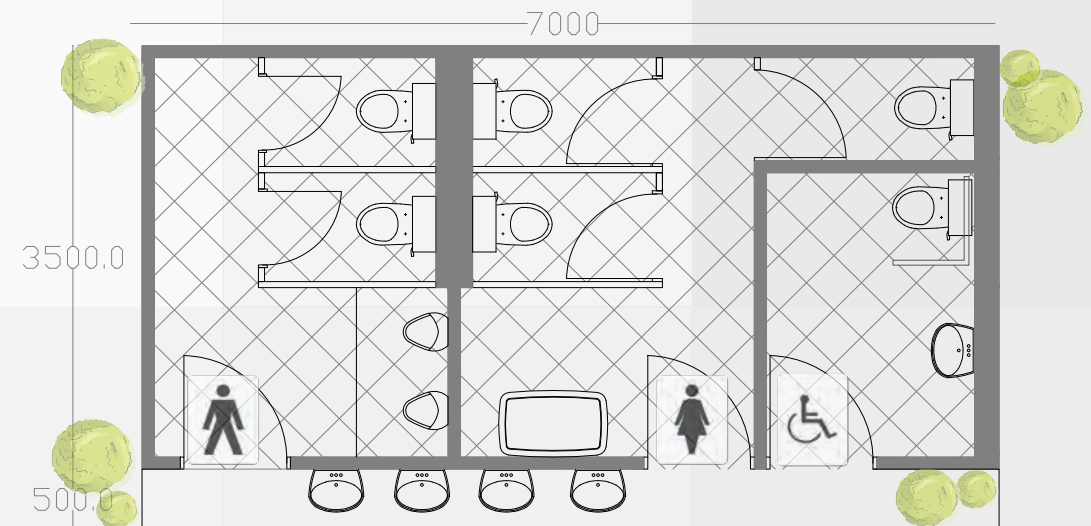
Finish : Steel Sheetting
and concrete/ render
YING YANG



1 MODULE TOILET - SINGLEMOD

Layout name : Singlemod
No. of Modules : 1
Size of Module : 4.8m x 3.5m
Area of Toilet : 33 sqm

This single module layout of toilets is best suited for compact / low foot-fall areas where public toilet is required. Easy to maintain due to its smaller size, it also accommodates a unisex accessible toilet.



2 MODULE TOILET - STAGGERED

Finish : Steel Sheeting, timber
cladding and concrete
/ render
SUAVE



Finish : Paint and Steel
metal canopy
FLOAT

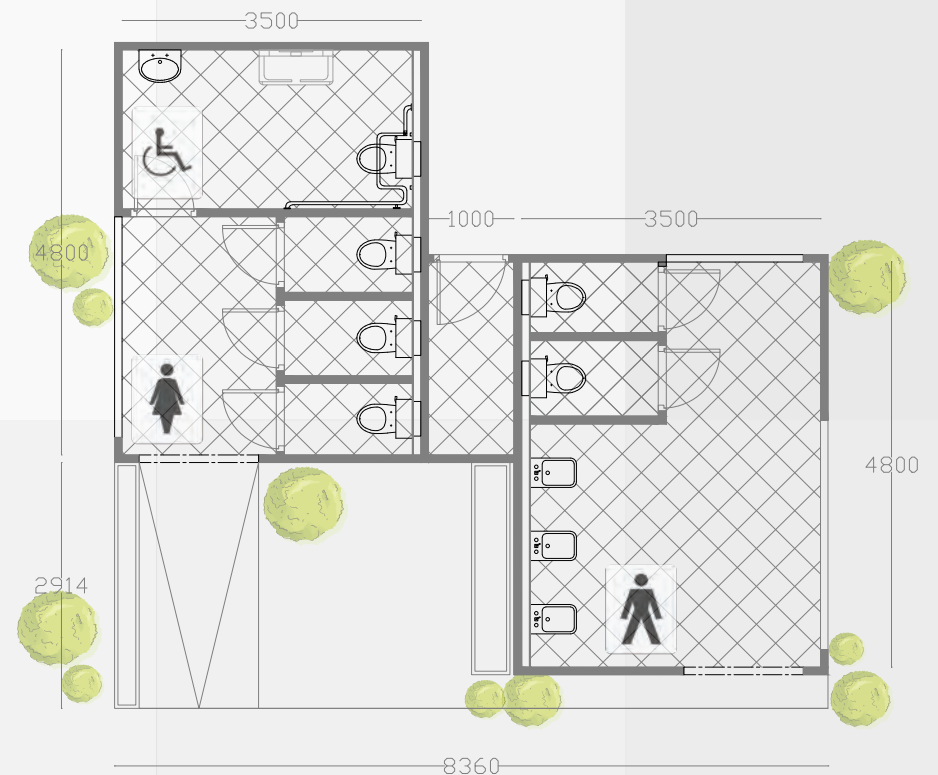


Finish : Steel Sheeting
and concrete/render
YING YANG



Layout name : Staggered
No. of Modules : 2
Size of Module : 4.8m x 3.5m
Area of Toilet : 34 sqm

This staggered two module toilet layout accommodates a direct ramp access and external hand-wash zone, acting as an intermediary space. Additionally, a maintenance and service space is provided between the toilet blocks which is accessible from the rear.



2 MODULE TOILET - L SHAPE

Finish : Steel Sheeting,
Timber cladding and
Paint
RUSTIC



Finish : Timber,
Steel Sheet,
Paint
PORTAL



Finish : Paint on concrete /
render and stone cladding with
Steel sheet cladded canopy
OUTBACK



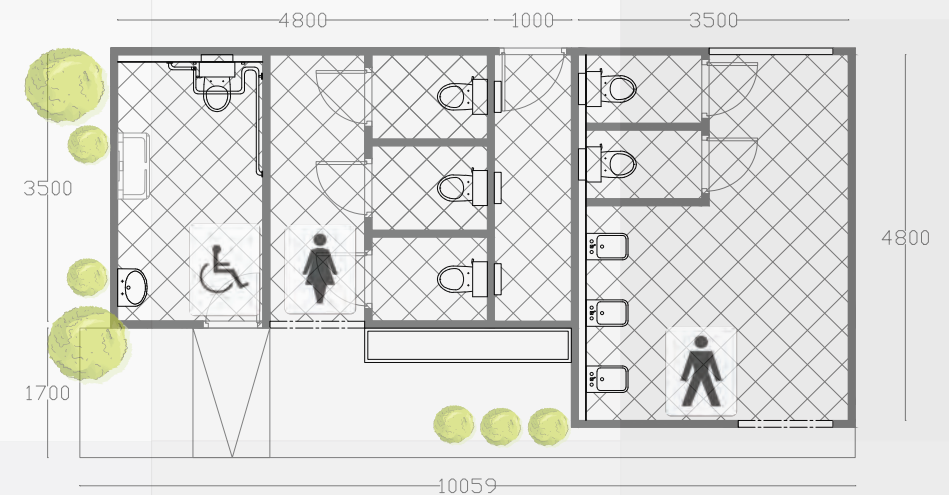
Layout name : L Shape

No. of Modules : 2

Size of Module : 4.8m x 3.5m

Area of Toilet : 38 sqm

This L-Shaped two module toilet layout accommodates a direct ramp access and external hand-wash zone, acting as an intermediary space. Additionally, a maintenance and service space is provided between the toilet blocks which is accessible from the rear.



2 MODULE TOILET - L2 SHAPE

Finish : Steel Sheeting, timber
cladding and concrete
/ render
SUAVE



Finish : Paint and Steel
metal canopy
FLOAT



Finish : Steel Sheeting
and concrete/ render
YING YANG



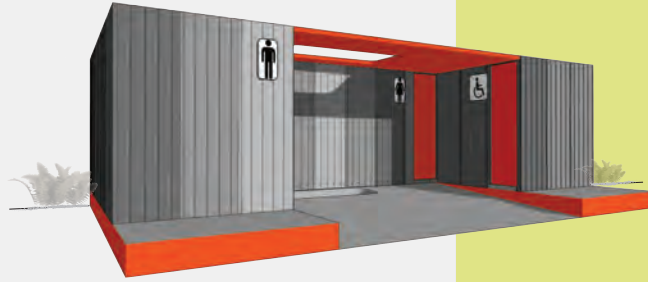
Layout name : L Shape
No. of Modules : 2
Size of Module : 4.8m x 3.5m
Area of Toilet : 33 sqm

This two module L-Shaped designed toilet block contains a central service lobby and veranda area with washbasins.

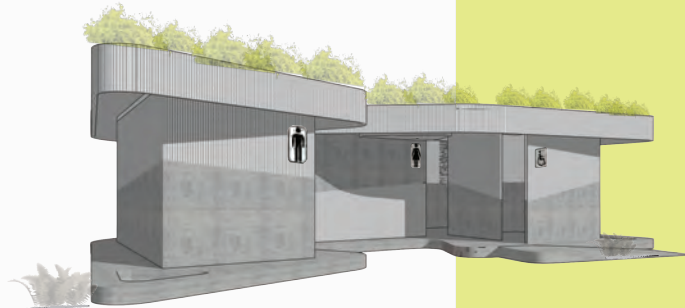


3 MODULE TOILET - C SHAPE

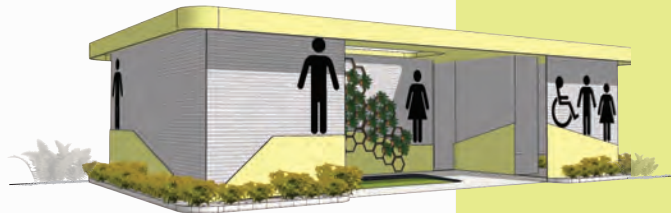
Finish : Painted
concrete / render
and Colorbond sheet
VIBRANT



Finish : Concrete
and Colorbond sheet
DYNAMIC



Finish : Colorbond sheet
and Paint on Concrete
/render
YELLOW



Finish : Grooving on
Concrete/ render
YELLOW



Layout name : C - Shape

No. of Modules : 3

Size of Module : 6.8m x 3.3m

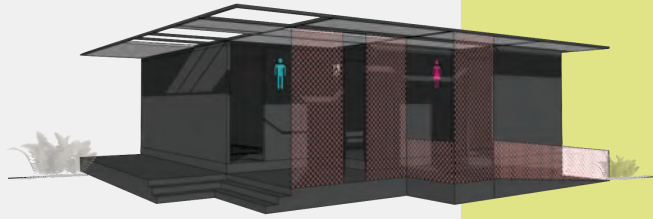
Area of Toilet : 92 sqm

This three module C - Shape designed toilet block, contains a highly visible and accessible central courtyard. This design is well suited for public toilet spaces as it meets the CPTED (Crime Prevention Through Environmental Design) guidelines where layout and visibility go hand-in-hand.



3 MODULE TOILET - CASCADE

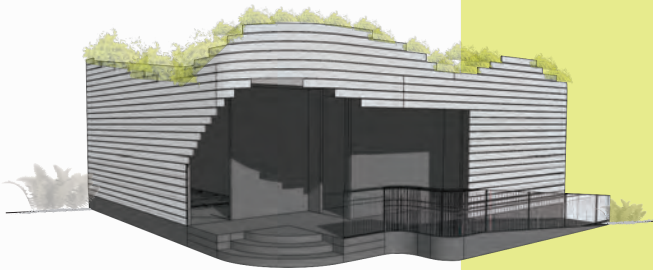
Finish : Painted/ rendered
with metal canopy
and mesh screens
SLEEK



Finish : Steel slats
STRIPES



Finish : Steel slats
CURVI-METAL



Finish : Paint on render/
cement sheet/
concrete + Canopy
VERNACULAR



Layout name : Cascade

No. of Modules : 3

Size of Module : 6.8m x 3.3m

Area of Toilet : 84 sqm

As the name suggests, this toilet's layout allows for more visibility owing to the offset modules and the space created in front of them. Extra wall surfaces opened up to the exterior, provide better ventilation.

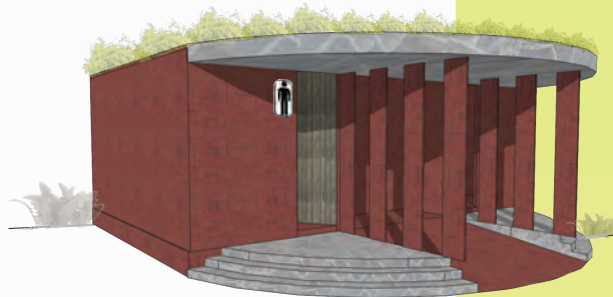


3 MODULE TOILET-OUTSTANDING

Finish : Timber /
steel sheeting on concrete
WILD WEST



Finish : Steel slats,
Render finish
APEX

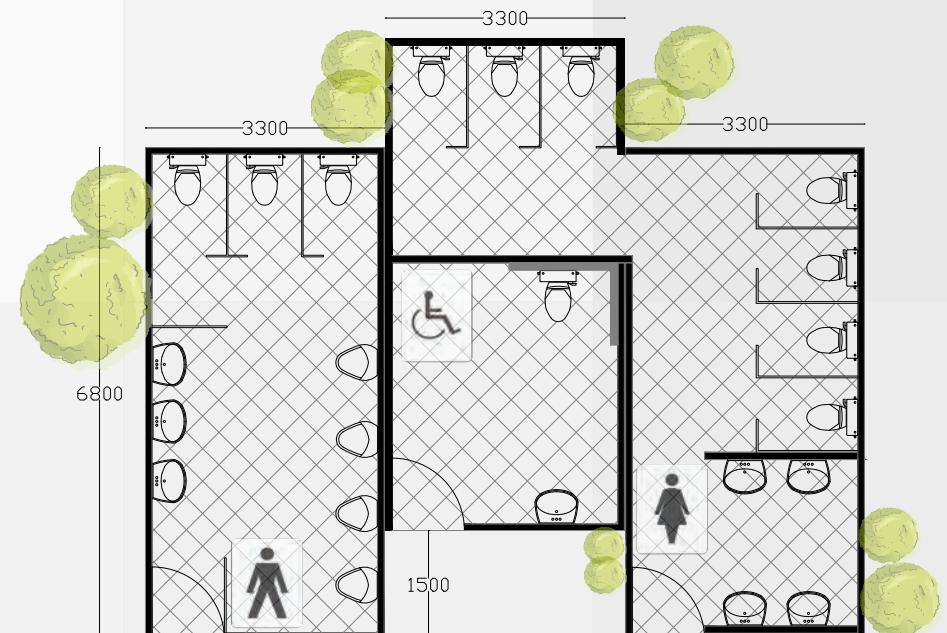


Finish : Steel slats with
stone cladding
STONE-AGE



Layout name : Outstanding
No. of Modules : 3
Size of Module : 6.8m x 3.3m
Area of Toilet : 68 sqm

This layout, designed to occupy as minimum a footprint as possible, also allows for a recess in the centre for the accessible toilet, this can translate to increased length to accomodate a direct ramp. Offsets in the layout also allow for better ventilation and natural lighting.

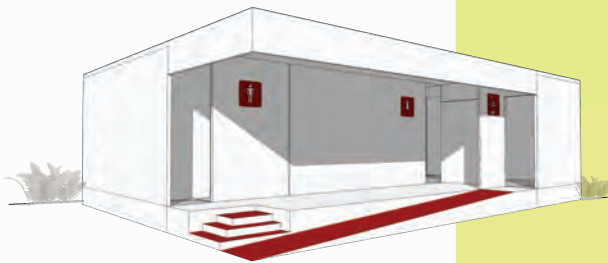


3 MODULE TOILET - Z - SHAPE

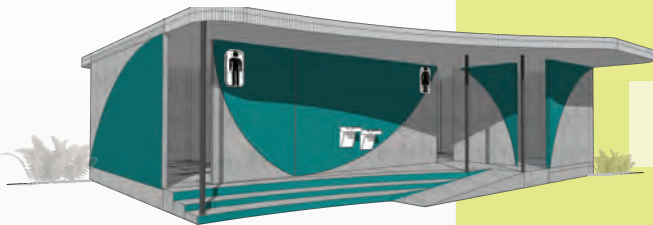
Finish : Steel Sheeting
on concrete
CLASSIC



Finish :Paint on concrete /
cement sheet
CONTEMPORARY



Finish : Paint on concrete/
render and steel
sheet canopy
DYNAMIC



Layout name : Outstanding
No. of Modules : 3
Size of Module : 6.8m x 3.3m
Area of Toilet : 103 sqm

The large central shaded zone in this three module Z-Shaped design is a boon to users for it provides shaded waiting space. CPTED guidelines have been followed, providing both visibility and ventilation.



3 MODULE TOILET - TRAIN

Finish : steel Sheeting and
concrete / render
SUAVE



Layout name : Train
No. of Modules : 3
Size of Module : 6.8m x 3.3m
Area of Toilet : 68 sqm

Finish : Paint on concrete/
render and steel
sheet and canopy
LIBESKIND



The linear three module Train arrangement of this design aids easy segregation of gender. Visibility is at its greatest with the entire lock being accessible along a single line. This design is recommended for areas such as jogging tracks in parks and along public walkways.



"Whether you have a large space or small, we have a modular design option to suit your needs".

TABLE OF CONTENTS

Dwelling units - Cabins

One Module

Simpleton
Timbre
Elegance

Two Module

T- Contrast
Side Fly
T-Fly

Three Module

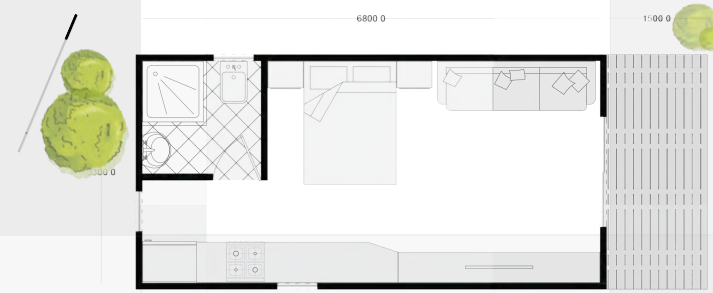
Alcove
Classic Sloped
C-Panel

Four Module

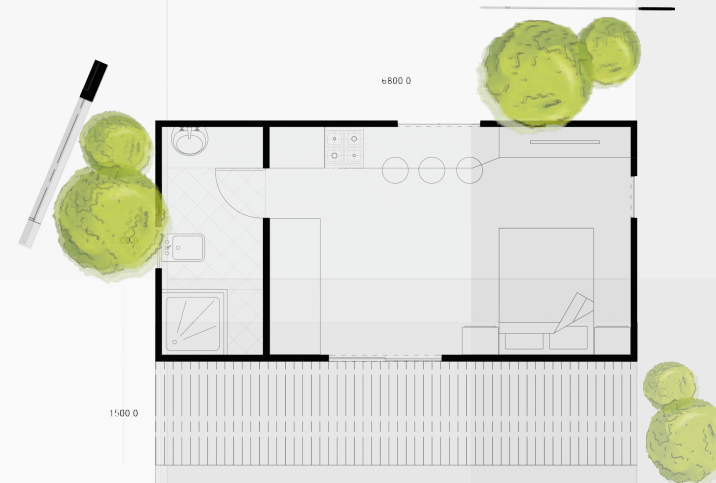
Mohawk
L-Step
Crown

1 MODULE CABIN

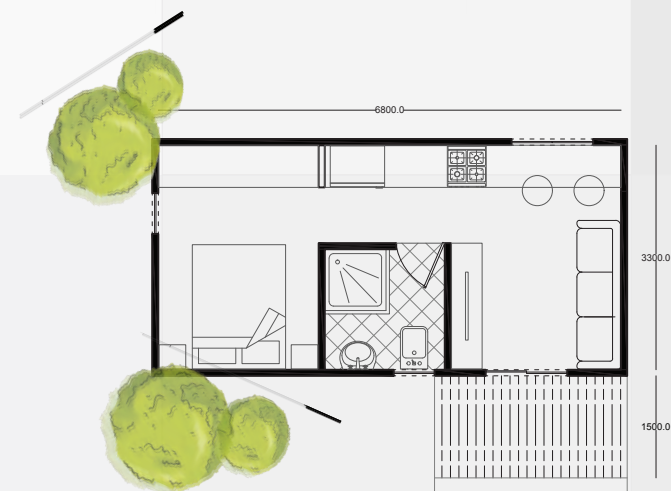
Finish : Colorbond
Timber cladding
SIMPLETON



Finish : Concrete
/ Render & timber
cladding
TIMBRE



Finish : Concrete
Timber cladding
Paint/render finish
ELEGANCE



2 MODULE CABIN

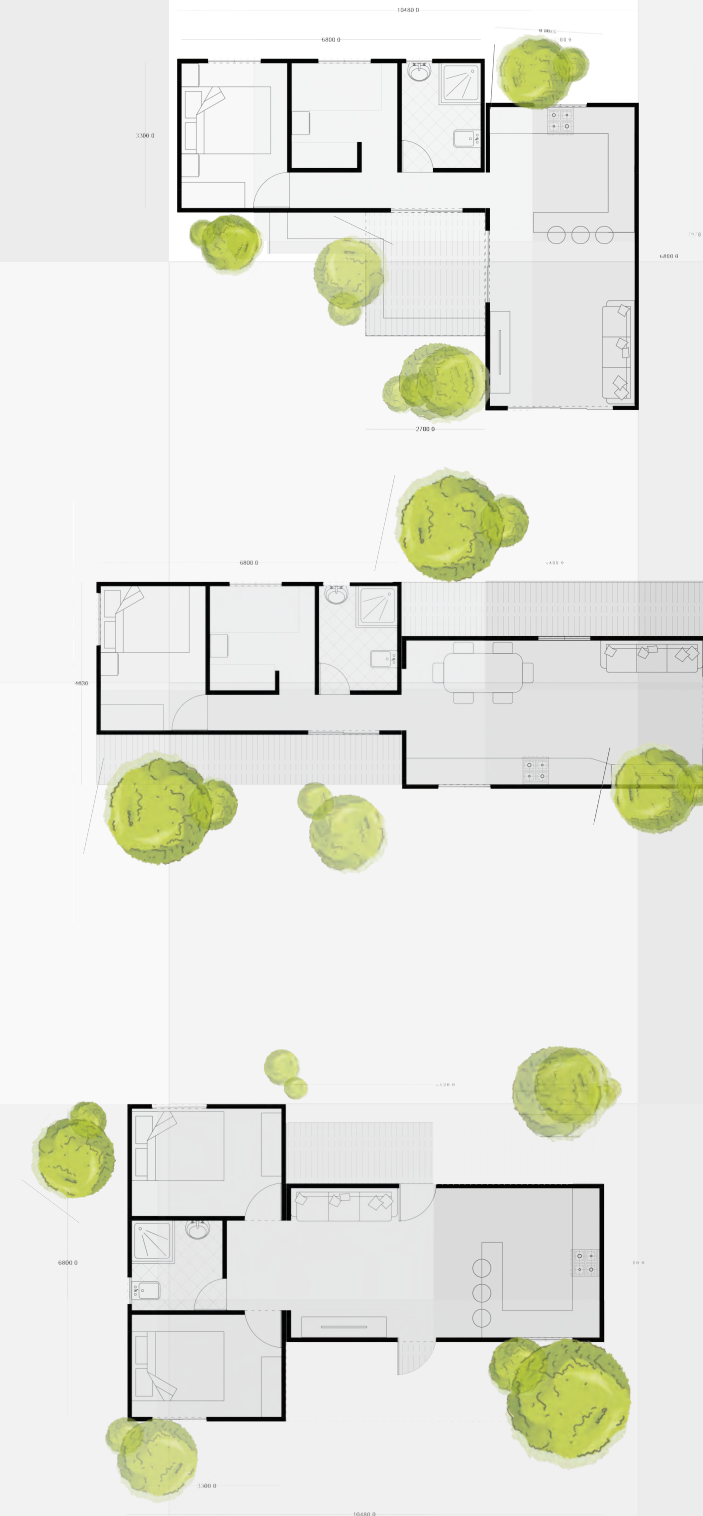
Finish : Colorbond/
Painted concrete/cement
sheet/wooden panelling
T - CONTRAST



Finish : Timber cladding/
Colorbond
SIDE FLY



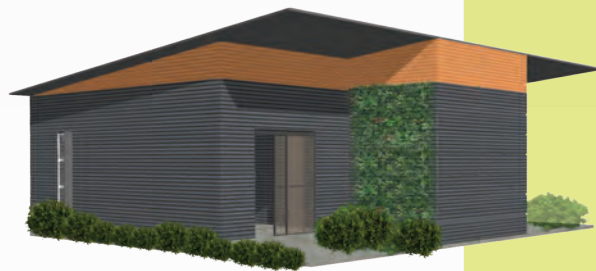
Finish : Patterened concrete/
painted cement sheet/
timber cladding
T-FLY



Finish : Timber cladding /
concrete
ALCOVE



Finish : Colorbond/
timber cladding
green walls
CLASSIC SLOPED



Finish : Timber cladding
green roofing
render finish / concrete/
cement sheet
C- PANEL

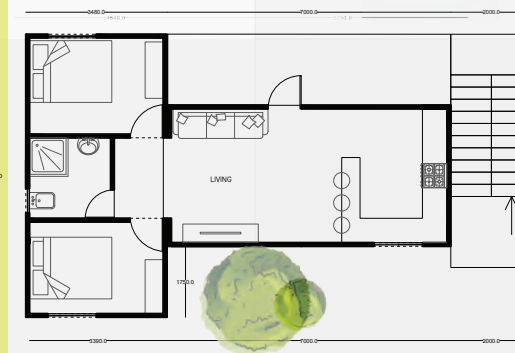
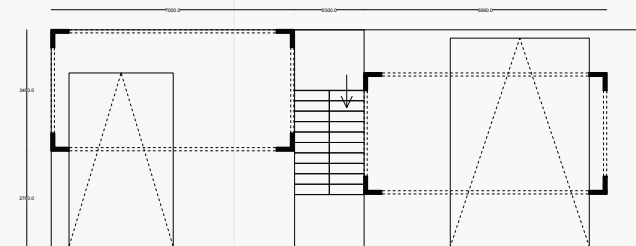
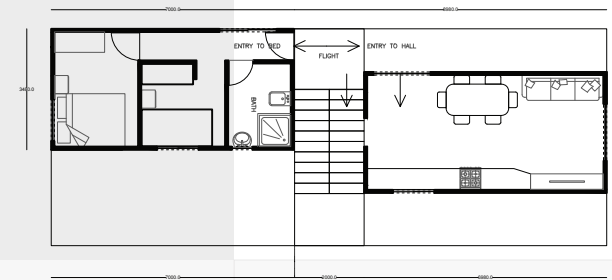


3 MODULE CABIN

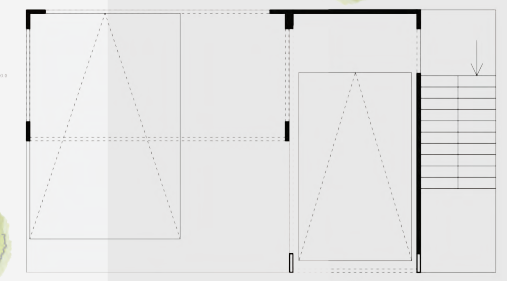


4 MODULE CABIN

Finish :Concrete/
wooden panelling
Painted render finish
Green walling
MOHAWK



Finish :Concrete/
wooden panelling
Metal louvres
Green walling
L - STEP



Finish :Colorbond/
wooden panelling
Metal Trellis
Green walling
CROWN

